

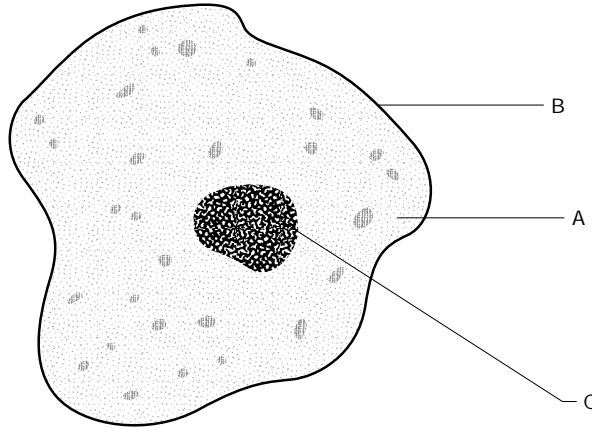
# Chapter 1

# Exam-style questions

Question number	Section	Target	Level of demand
2	1.1	DA/SA	LD

Name \_\_\_\_\_ Class \_\_\_\_\_

2 a) (i) Name the parts of the animal cell labelled A, B and C.



3 marks

(ii) Draw lines to link the boxes below to show the functions of the parts you have labelled.

**Part of animal cell**

**Function**

A

This controls the passage of substances into and out of the cell

B

This controls what goes on in the cell

C

This is where most chemical reactions take place in the cell

2 marks

b) The diagram shows a sperm cell.



A sperm is adapted to move towards the female egg and fertilise it. Describe **one** way the structure of the sperm helps it to do this.

\_\_\_\_\_  
\_\_\_\_\_

1 mark

**Total mark = 6**